

Pests

Aphid- Adult Stage



Fungus Gnat



Each leaf looks like a
maidens dress



MAIDENHAIR FERN

AFRICAN LILY



Red like a ginger

GINGER





BROMELIAD



Looks like ink was
spilled inside it

©1998 Douglas C Needham
Oklahoma State University

©1998 Douglas C Needham
Oklahoma State University



PERUVIAN

Speckles



Squinty Eyes

©1998 Douglas C Needham
Oklahoma State University

CHINESE EVERGREEN

FLAMINGO

*has reddish stems



SNAPDRAGON



mouth of a
dragon/snaps shut

Fire
breathing
dragon!



ZEBRA



Stripes
like a
zebra

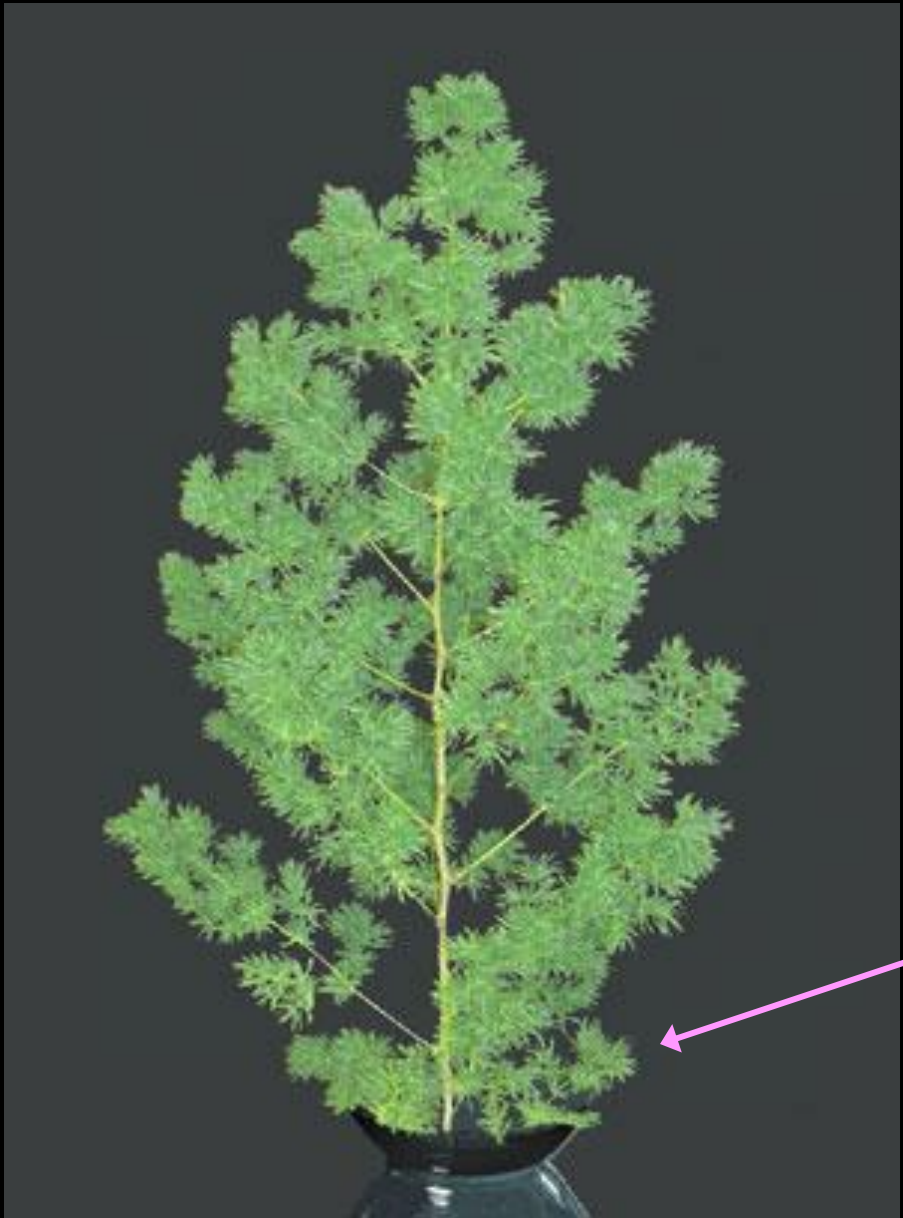


©2000 Douglas C Needham
Oklahoma State University



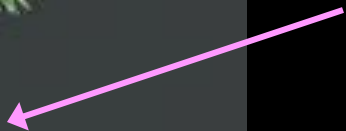
ONLY PINE

NORTHFOLK ISLAND PINE



MING FERN

Little balls



SPRINGERI

Looks springy



Plumosa



BIRDS NEST



Nest like inside

PONY TAIL PALM

Hair (pony tail)

Head (bulb)



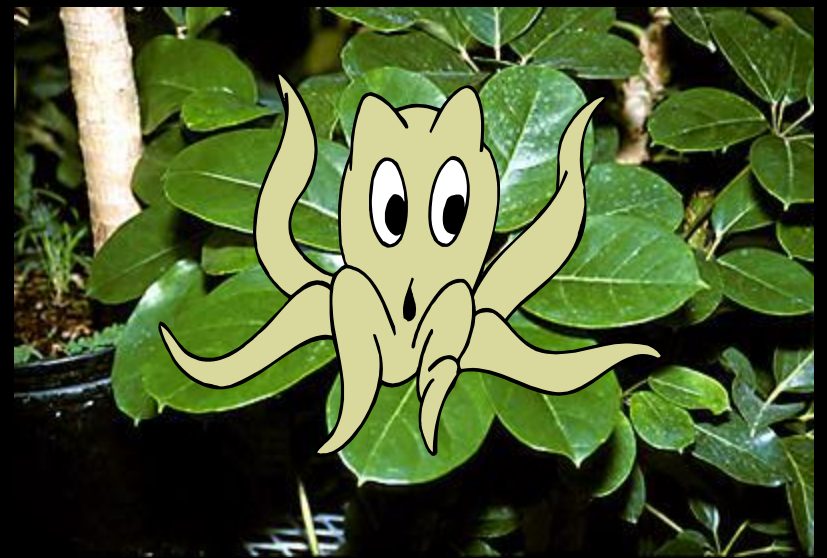
TUBEROUS BEGONIA



Fat flower



TUBerous reminds me of the *fat boy* in Willy Woka sliding up the TUBE



OCTOPUS TREE



AS(S)TER

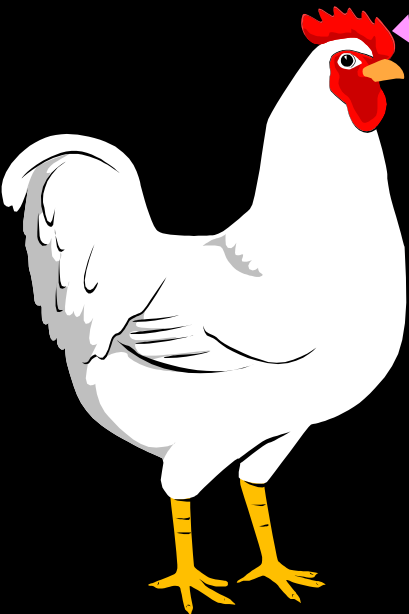


Ass hole

COCKSCOMB



©1998 Douglas C. Needham
Oklahoma State University



Cock of a
chicken



©1998 Douglas C. Needham
Oklahoma State University

PARLOR PALM



Palm tree

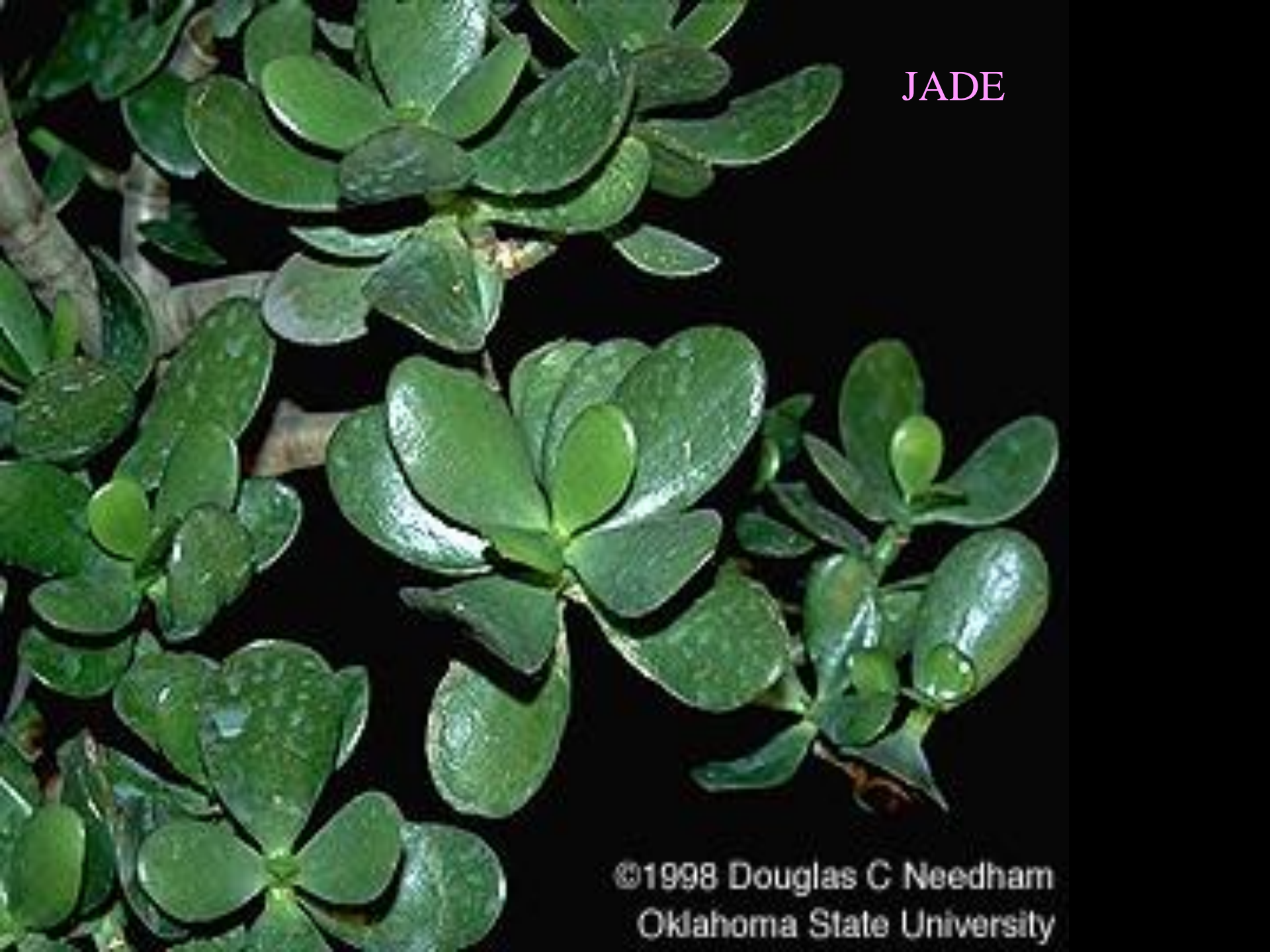


©1998 Douglas C Needham
Oklahoma State University

WAX FLOWER



Flower looks
like balls of
wax



JADE

©1998 Douglas C Needham
Oklahoma State University

CHRYSANTHEMUM



evil looking,
bloody veins



©1998 Douglas C Needham
Oklahoma State University

CROTON



LARKSPUR



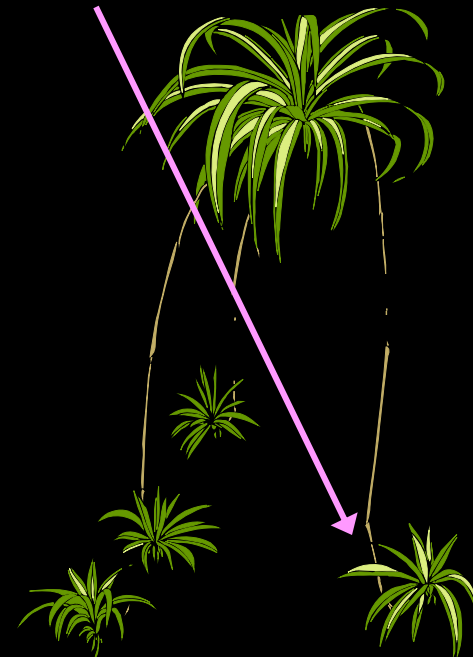
Leaves look
like spurs

SPIDER PLANT



Looks like
spider legs

*sometimes
has strings
coming off
with things
that look like
spiders on the
end



TI PLANT



Color of dark
tea

FLORIST'S CYCLAMEN

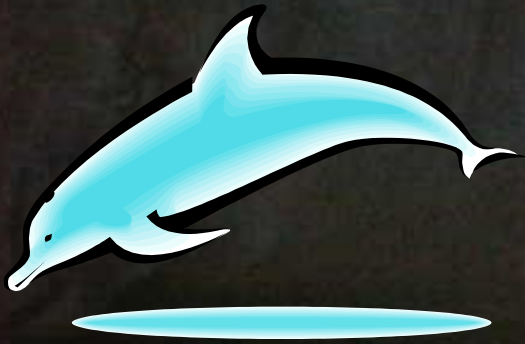


Bicycle Wheels



DELPHINIUM

Color of a
dolphin



CARNATION





DUMBCANE



Looks like cocaine was
sprinkled on it

FALSE ARALIA



Copyright (c) sclarke
<http://plantsdatabase.com/members/sclarke/>
Unauthorized Use Prohibited

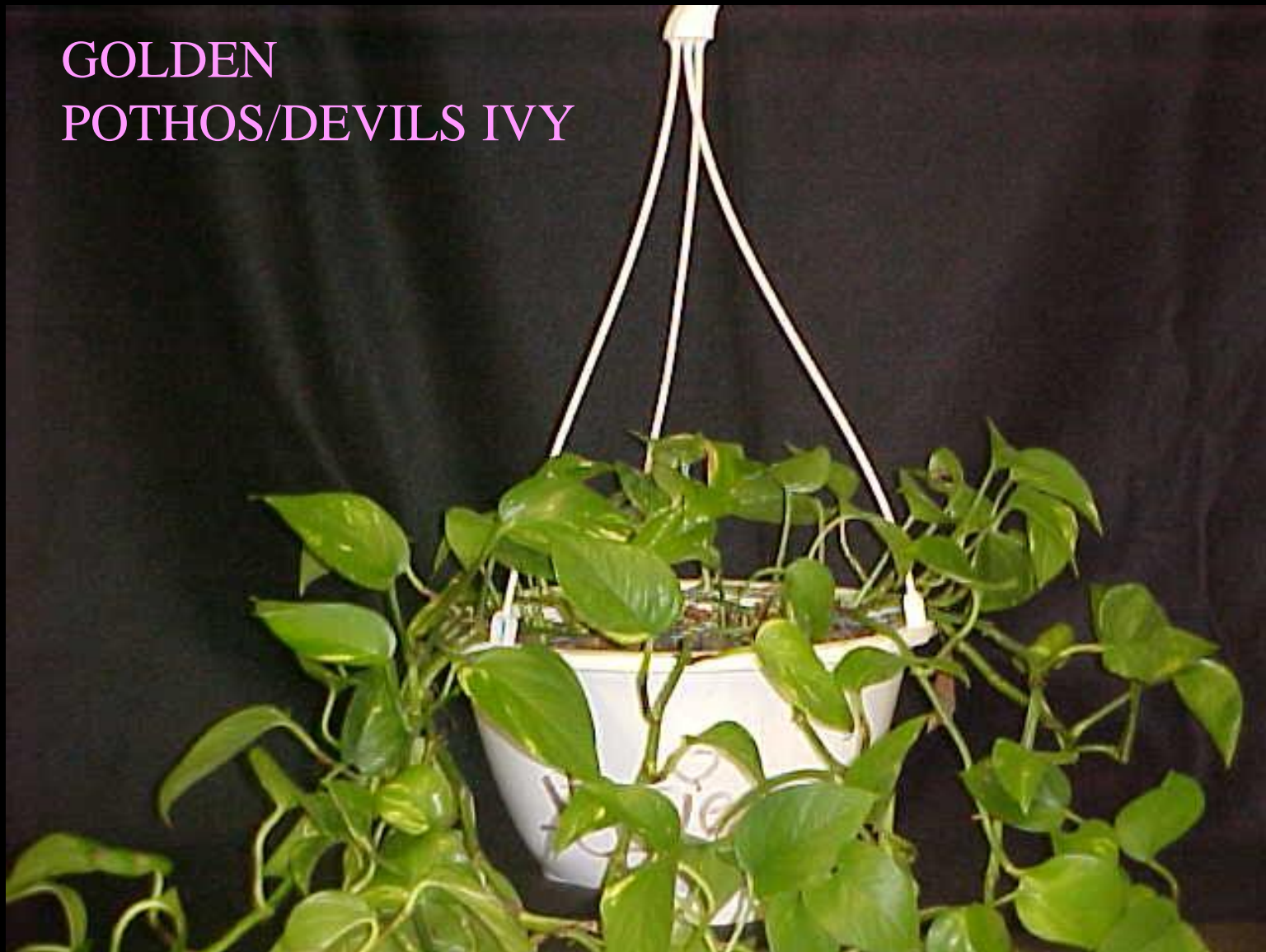


Copyright (c) AngelSong
<http://davesgarden.com/members/AngelSong/>

RED-MARGINED DRACAENA

Outlined with red

GOLDEN
POTHOS/DEVILS IVY



SPRING HEATHR



Looks crusty
or crumbly

CORN PLANT



CROWN OF THORNS



Thorns, duhh.

POINSETTIA



©1998 Douglas C Needham
Oklahoma State University

GERMAN PARSIAN VIOLET



©1998 Douglas C Needham
Oklahoma State University

flowers are the color violet

BENJAMIN /WEEPING FIG



Tear drops



FORSYNTIA

RUBBER TREE

Looks like
rubber



FIDDLELEAF FIG



Shape of a fiddle

FREESIA



GALAX LEAVES



LEMON LEAF

Shape of a
lemon



GERBERA DAISY

“gerber babies
have no limbs”

Gerbera have
no leaves



GLADIOLUS



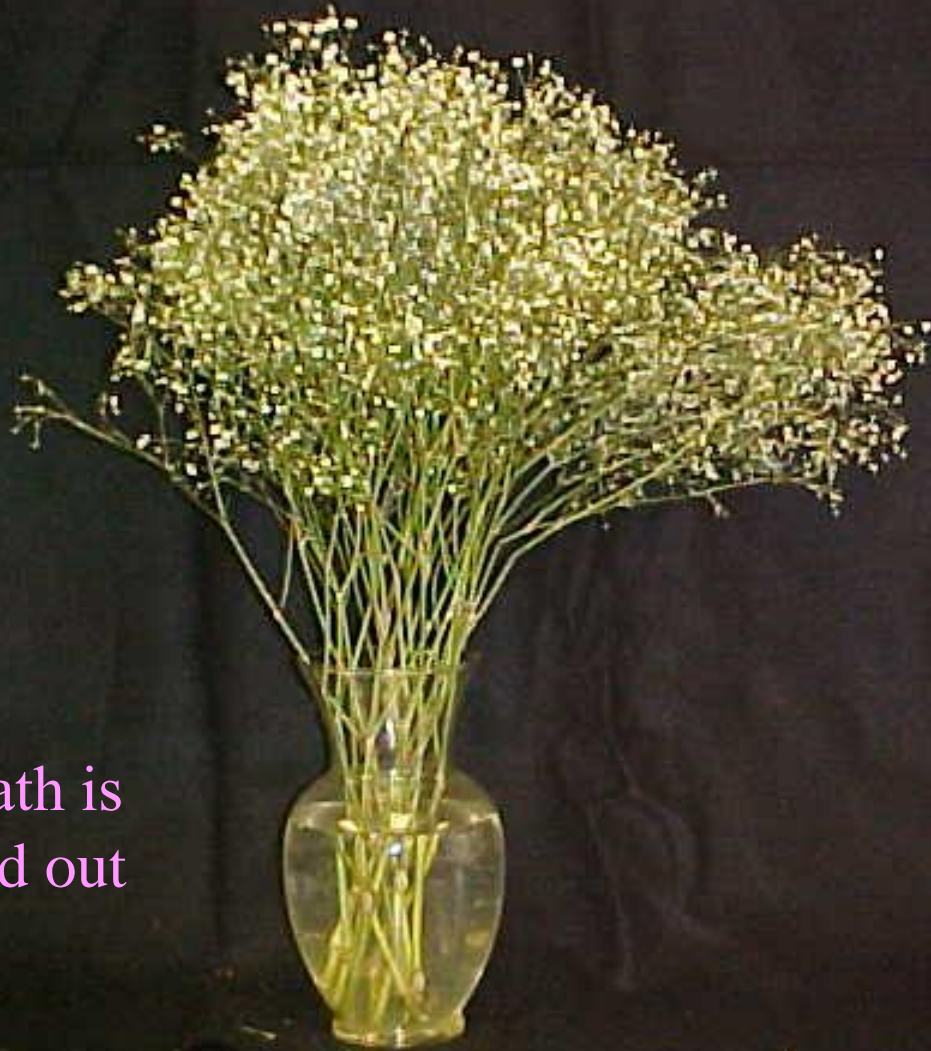
GLAD to be
growing up

BABY'S BREATH

Breath = air

Air = airy

So baby's breath is
airy and spread out



ENGLISH IVY



©1998 Douglas C. Needham
Oklahoma State University

SUNFLOWER





AMARYLLIS

*has a bulb

* Flower looks like a
Armadillo...sometimes.



©1998 Douglas C Needham
Oklahoma State University

WAX FLOWER



©2000 Douglas C Needham
Oklahoma State University

HYACINTH

Compared to
hydrangea this is
like a pine
CONE

HYACINTH = CONE!!!



©1999 Douglas C Needham
Oklahoma State University

IRIS



HYDRANGEA

Compared to hyacinth this
looks like broccoli

HYDRANGEA = BROCCOLI



KALANCHOE

*Big leaves
Little flowers



©1998 Douglas C Needham
Oklahoma State University

LIATRIS



STARGAZER



TRUMPET EASTER LILY



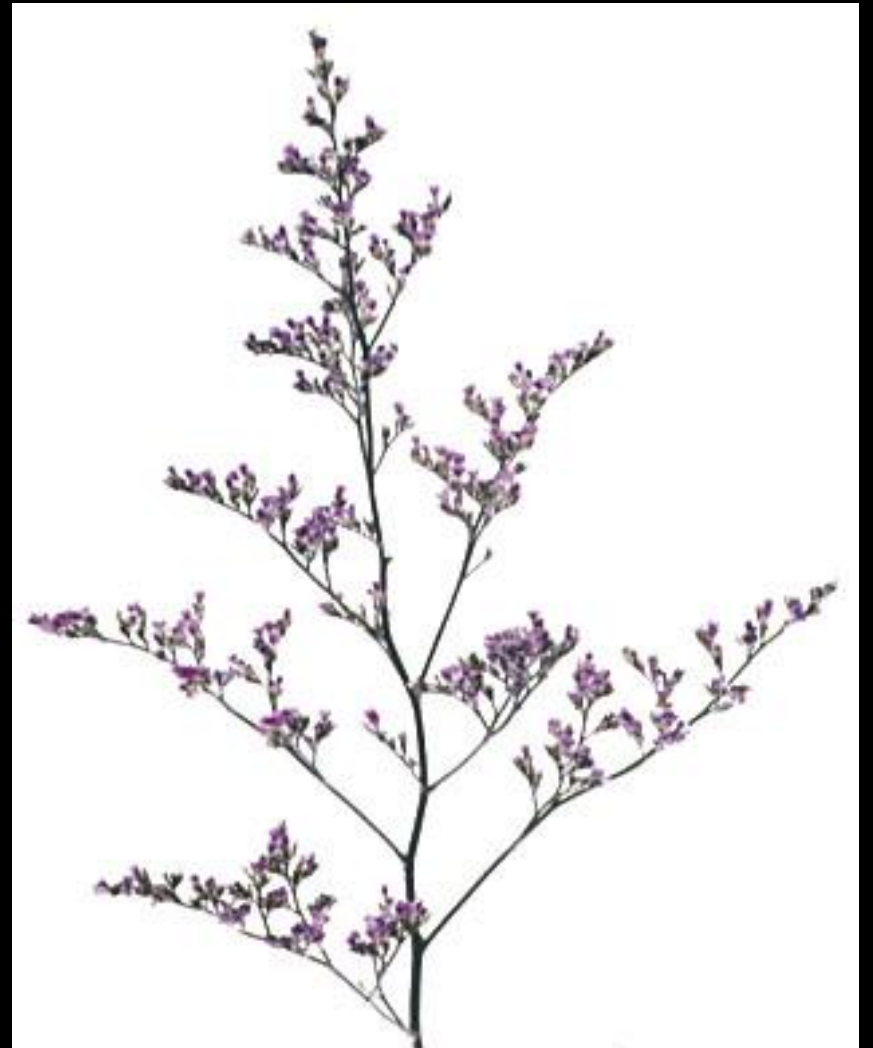
©1999 Douglas C Needham
Oklahoma State University

PRAYER PLANT

Hands that are praying



MISTY BLUE



STATICE



TRIANGLE STEM

LUPINE

Whoever decided
to call this lupine
instead of
bluebonnet is
loopy



COPYRIGHT PJ MITCHELL



COPYRIGHT PJ MITCHELL

STOCK



Floppy leaves

BELLS OF IERLAND



bell

PEONY



© 1999 Douglas C. Needham
Oklahoma State University

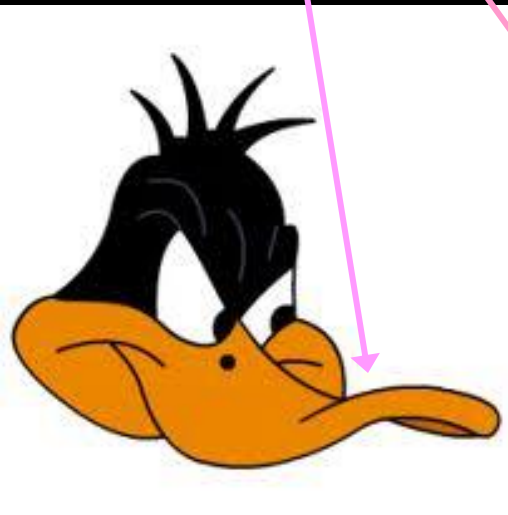
SPLIT LEAF PHILODENDRON

Leaves
are
split/slit



DAFFODIL

Has a bill like daffy duck



©1999 Douglas C Needham
Oklahoma State University

BOSTON FERN



ZONAL GERANIUM

Geranium zone



©1998 Douglas C. Needham
Oklahoma State University

BUTTERFLY ORCHID

Flower looks like
butterfly

*always planted in
wood or rocks



©2000 Douglas C Needham
Oklahoma State University



©2000 Douglas C Needham
Oklahoma State University

SWEDISH IVY

Cute and sweet looking



©1998 Douglas C Needham
Oklahoma State University

HEARTLEAF PHILDENDRON



Heart
shaped
leaves

©1998 Douglas C Needham
Oklahoma State University

MOCK ORANGE



TUBEROSE



PROTEA

Probably the funkiest
thing you're going to see

*fuzzy



AZALEA



*Leaves are
fuzzy

©1998 Douglas C Needham
Oklahoma State University

ROSE



LEATHERLEAF

*Shiny like
leather



THANKSGIVING CACTUS



AFRICAN VIOLET

Leaves are circular
and always extend
from the center



PUSSY WILLOW



PUSSY WILLOW

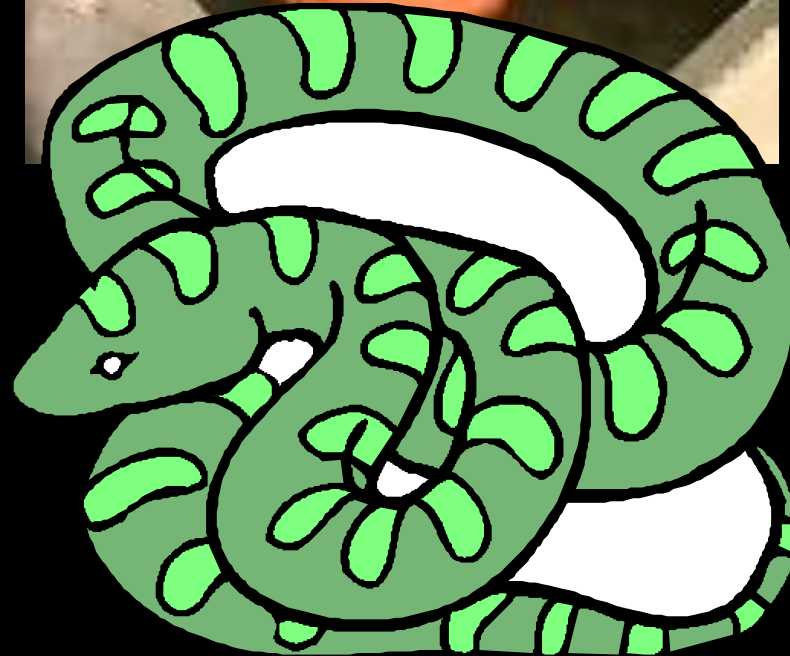
CURLY WILLOW



SNAKE PLANT



©1998 Douglas C. Needham
Oklahoma State University



©1998 Douglas C. Needham
Oklahoma State University

GLOXINIA

Flower has a
deep hole



©1998 Douglas C Needham
Oklahoma State University



PEACE LILY



© 1998 Douglas C. Needham,
Oklahoma State University

Leaves are long
and sad looking
Droopy



TULIP



BRIDAL WREATH



©1999 Douglas C Needham
Oklahoma State University

BIRD OF PARDISE

Has a beak like
a bird



NEPHYTHIS



HUCKLEBERRY

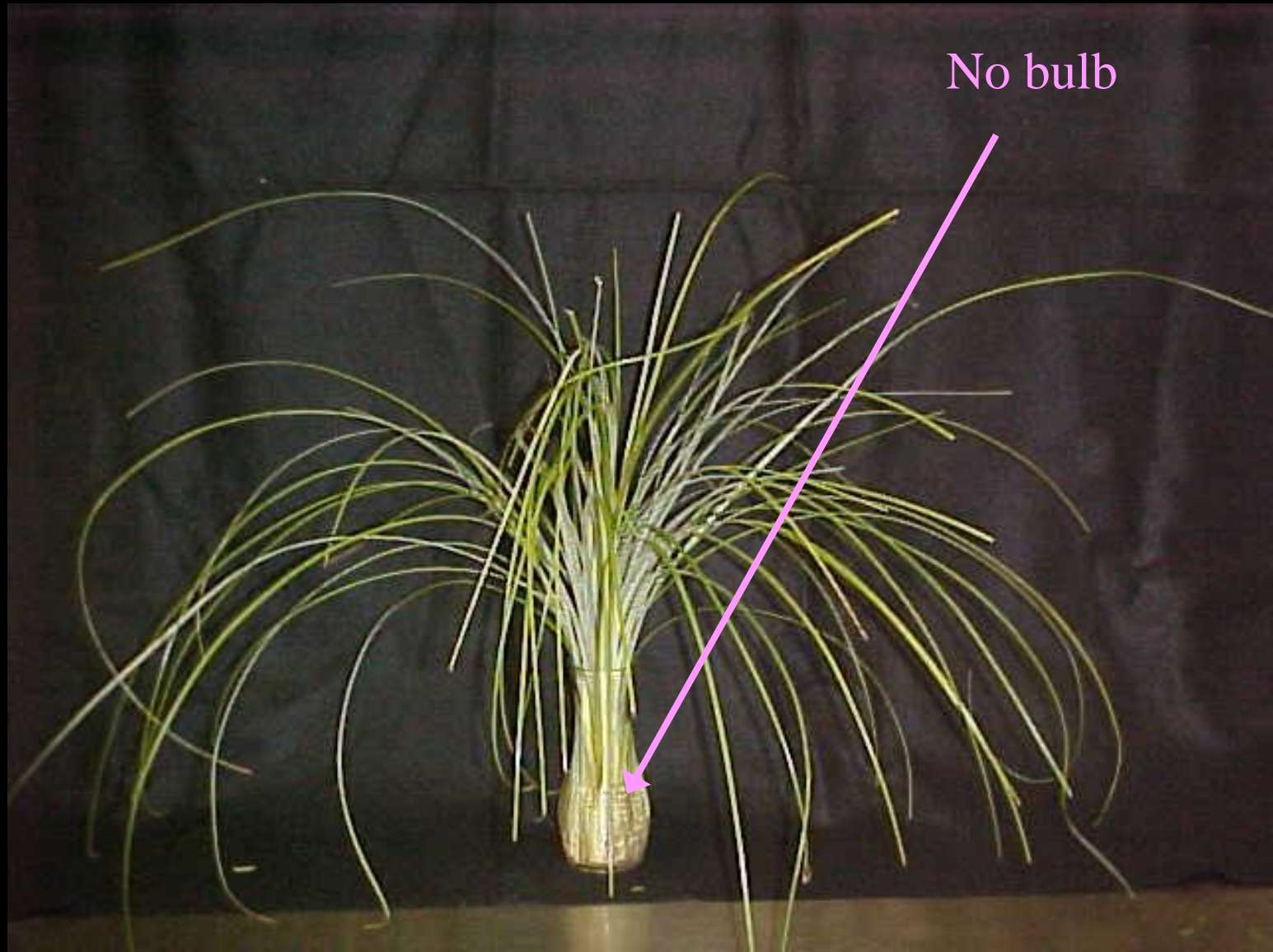


© 1999 Douglas C. Needham
Oklahoma State University



© 1999 Douglas C. Needham
Oklahoma State University

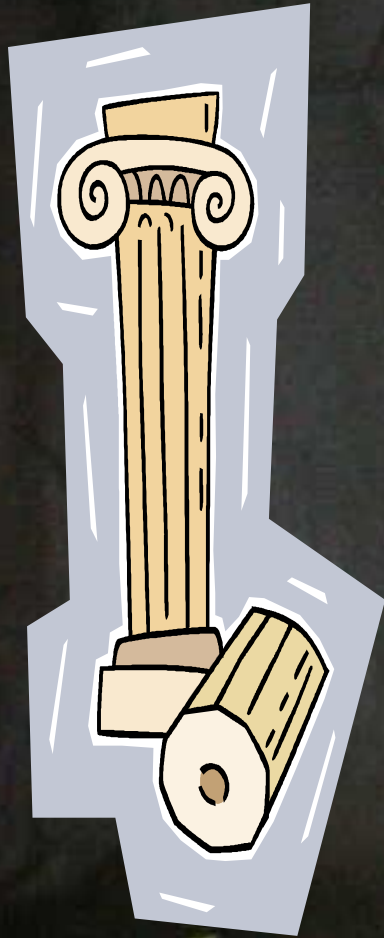
BEAR GRASS



No bulb

CALLA

Column



WANDERING JEW



©1998 Douglas C. Needham
Oklahoma State University



Gerbera daisy



Aster



chrysanthemum



carnation



Mum



Carnation



aster



Gerbera
Daisy

African Lily



Stargazer



Peruvian Lily



Peace



Easter



Snapdragon



Stock



Larkspur



Delphinium



Larkspur



Snapdragon



Stock



Delphinium



Maidenhair



Boston

Leatherleaf



Ming



Birds nest



Springeri



Plumosa



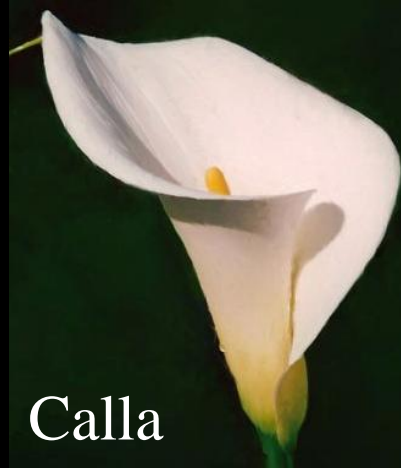
Octopus tree

Mock Orange or pittosporum





African
Lily



Calla



Stargazer

Easter



Peace

Peruvian Lily





ponytail

Bear grass



Devil's



English



Swedish

Heartleaf



Mock Orange or pittosporum





Weeping fig



Lemonleaf



Huckleberry



Queen's Anne's lace



Baby's breath





Ginger





Bromeliad



Zebra Plant



Split-leaf



Chinese Evergreen

Prayer Plant





Flamingo Flower



Norfolk Island Pine





Wax plant

Waxflower





Spider
Plant



Snake Plant





Dumbcane



Poinsettia



Wandering Jew



Watermelon





Ti plant



Rubber tree





Fiddleleaf



Jade plant



Galax





Croton





Pussy willow

Curly Willow



African Violet



Zonal Geranium



Tuberous Begonia



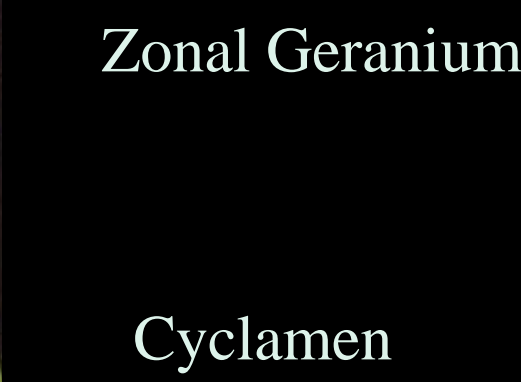
German Persian Violet



Cyclamen



African Violet



Zonal Geranium



Cyclamen



Tuberous Begonia

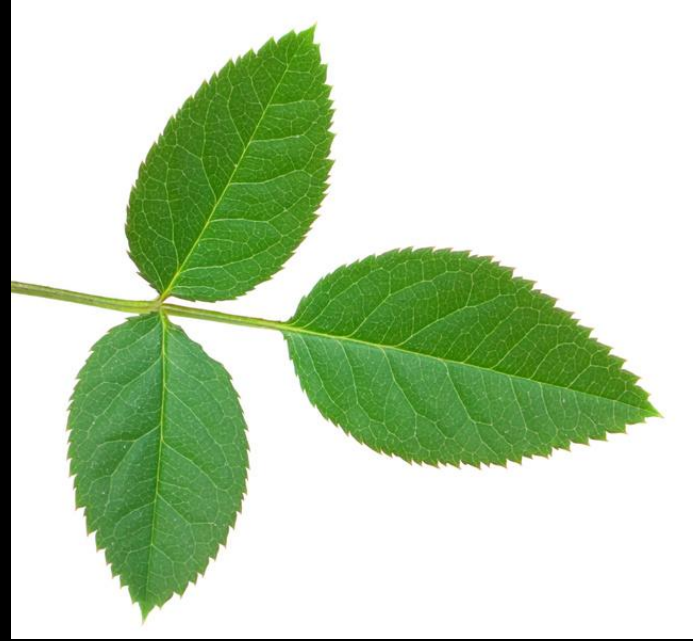


German Persian Violet





Rose



Tuberose



Tulip



**Thanksgiving
Cactus**



Scotch Broom



Parlor palm



Crown of thorns



False aralia



red-margined
dracaena



Bird of paradise



Iris





Bells of
Ireland

Spring Heather



Liatris



Butterfly Orchid

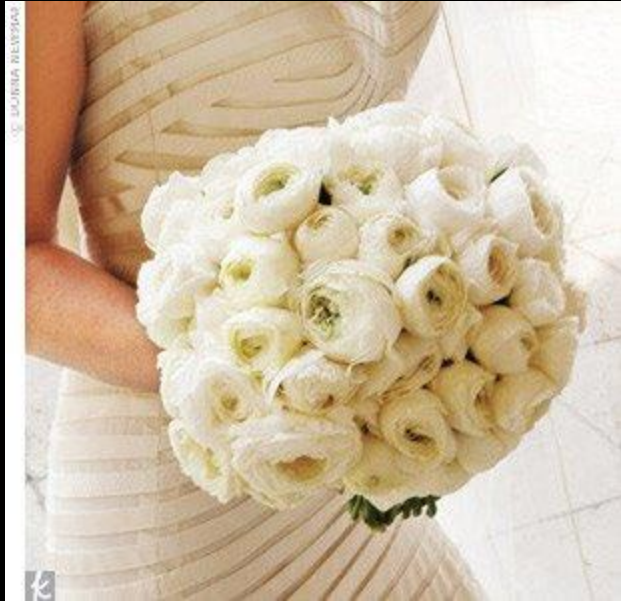


Misty Blue

Calathea



Ranunculus



Lots of petals
and very weak
stems.

Mrs. Malone's
favorite
flower!!!!



Shrimp Plant

Looks like dead shrimp...



Artichoke



Dahlia



Dendrobium Orchid



Blue Thistle



Lisianthus



Hypericum Berries



Tree Fern



Spider Chrysanthemum

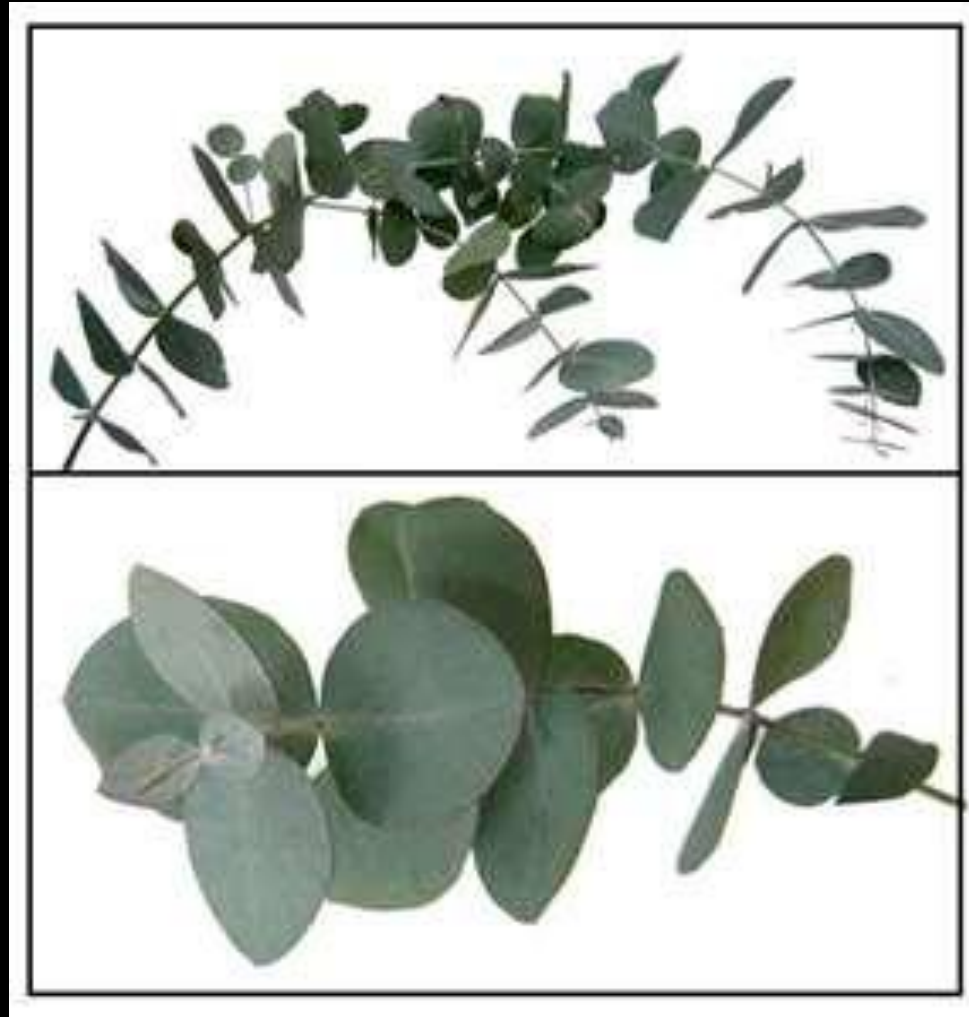


©2010 Mick Brown

Green Corn Plant



Eucalyptus



Sea Lavender Statice

sea lavender, statice

arfibinsted '08



Myrtle



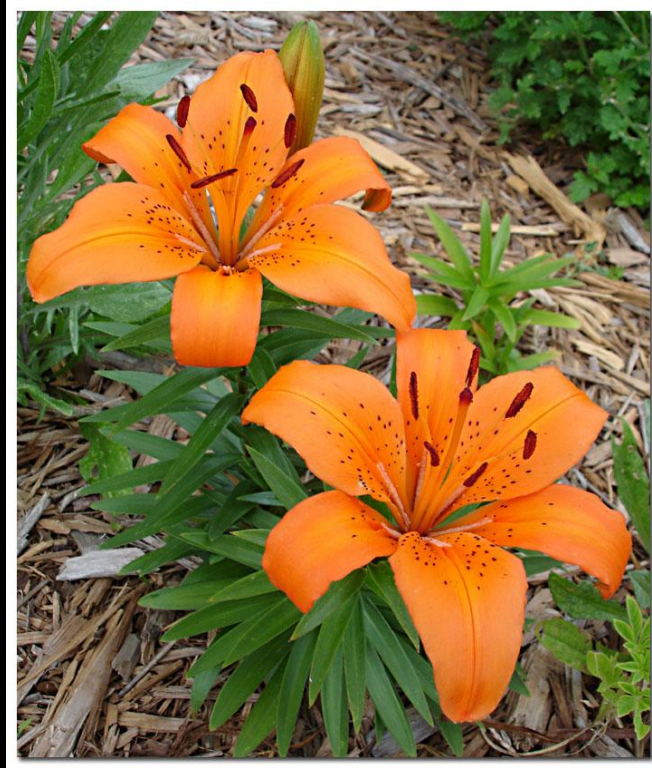
Flat Fern



Zigzag Plant



Asiatic Lily



These lilies have straight stems and many brightly colored blossoms ranging from the softest pastels to fiery reds and oranges. Asiatic lilies grow 2 to 3 feet tall and bloom over a long season. These will have no scent.

Peperomia



Italian Ruscus



Israeli Ruscus





Anchor Tape



Card Holders



Casket Saddle



Chenille
Stems (pipe
cleaners)



Water Tubes



Wrist Corsage Holder

Solidago, Goldenrod



Viburnum



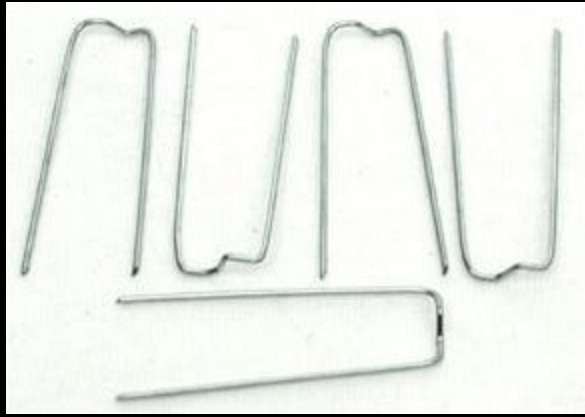
Leaf Miner- Adult Stage



Mealy Bug



Greening Pins



Pick Machine



Enclosure

Card



Floral Tape



Nosegay Holder



Tulle



Wire Easel

Stem Cutter



Sheet Moss



Dixon Pen



Corsage Pen



Boutonniere Pen



Pin holder (frog)



Glue Gun—
duh...don't get this
wrong!!! Desmond



Pests

Aphid- Adult Stage



Fungus Gnat



Scale- Adult stage



Spider Mite



Thrip-adult stage



Whitefly



Diseases

Anthracnose



Black Spot



Botrytis

Mosaic Virus

Damping off- affects seedlings



Powdery Mildew